

LUBRICATION

ORDER

LO5-6115-400-12

7 OCTOBER 1975 (Supersedes LO5-6115-400-12 Dtd 11 OCT 1968)

**GENERATOR SET, DIESEL ENGINE: 200 KW, 3 PHASE, 60 CYCLE,
CONVERTIBLE TO 167 KW, 50 CYCLE, SKID MOUNTED
(MILITARY STANDARD MODEL SF-200-MD/CIED)
W/ALLIS CHALMERS ENGINE MODEL 25000**

Reference: FEDERAL SUPPLY CATALOG C9100-IL

Intervals are based on normal hours of operation. Adjust to compensate for abnormal operation and severe conditions or contaminated lubricants. During inactive periods, sufficient lubrication must be performed for adequate preservation.

Clean fittings before lubricating.

Relubricate after washing.

Drain crankcase only when hot after operation; replenish and check level when cool.

WARNING

Dry cleaning solvent, P-D-680, used to clean parts is potentially dangerous to personnel and property. Avoid repeated and prolonged skin contact. Do not use near open flame or excessive heat. Flash point of solvent is 100 degrees F. (38° C.) - 138 degrees F. (59° C.).

Clean parts with SOLVENT, dry-cleaning (Federal Specification P-D-680). Dry before lubricating.

* The time specified is the time required to perform all services at the particular interval.

* TOTAL MAN-HR		* TOTAL MAN-HR	
INTERVAL	MAN-HR	INTERVAL	MAN-HR
10	0.4	100	0.2
		300	1.0

FOLD

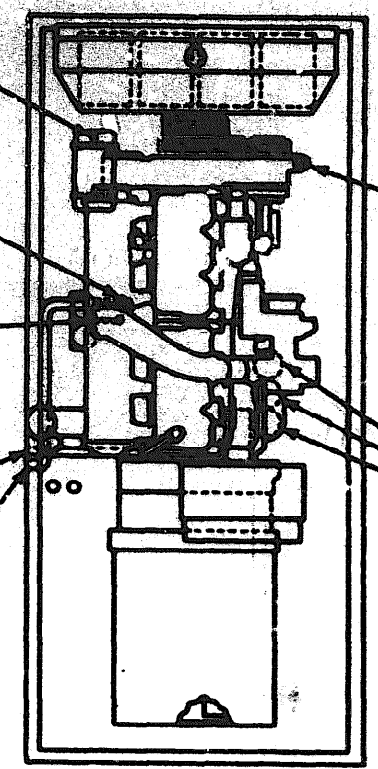
FOLD

LUBRICANT ● INTERVAL

INTERVAL ● LUBRICANT

- Hydraulic reservoir
Fill And Level Cap
(Check level)
- Crankcase Oil Drain
Valve
(Drain & Refill.)
- Crankcase Oil Level
Gage
(Check level)
(See note 4)
- Crankcase Breather Cap
(Remove, clean, rein-
stall)
- Crankcase Oil Drain
Plug
(Drain and refill)

- OHA 10
- 300
OR
6M
- 10
- 100
- 300
OR
6M



- OE/
HDO Crankcase Oil Fill
Cap
(See key)
CAUTION: When
OEA Oil is used
the level will be
checked more often.
- 300
OR
6M Crankcase Oil Filter
Elements
(Disassemble, clean,
housing; renew ele-
ments and reassemble)
(See note 3)

-KEY-

LUBRICANTS	CAPACITY	EXPECTED TEMPERATURES			INTERVALS
		Above +32° F 0° C	+40° F to -10° F +5° C to -23° C	0° F to -65° F -18° C to -50° C	
OE/HDO-LUBRICATING OIL, Engine		OE/HDO 30	OE/HDO 10	OEA	Intervals given are in hours of normal operation
Crankcase	44 qts (41.8L)				
Oil Can Points					
OEA-Lubricating Oil, Artic					
OHA-FLUID, Hydraulic, Petroleum Base					
Hydraulic Fluid Tank	8 qts (7.6L)				

NOTES:

1. **FOR OPERATION OF EQUIPMENT IN PROTRACTED COLD TEMPERATURES BELOW -10° F. (-23° C).** Remove lubricants prescribed in the key for temperatures above -10° F. (-23° C). Clean parts with SOLVENT, dry-cleaning. Relubricate with lubricants specified in the key for temperatures below -10° F. (-23° C).

2. **OIL FILTER.** After installing new filter element, fill crankcase, operate engine 5 minutes, check housing for leaks, check crankcase oil level and bring to full mark.

3. **OIL CAN POINTS.** Every 100 hours lubricate hinges, latches, control linkages, and all exposed adjusting threads with OE/HDO.

4. **OIL LEVEL GAGE.** Gage is marked on both sides. One side indicates static oil level and other side is marked for running oil level.

Copy of this Lubrication Order will remain with the equipment at all times; instructions contained herein are mandatory.

By Order of the Secretary of the Army:

FRED C. WEYAND
General, United States Army
Chief of Staff

FOLD

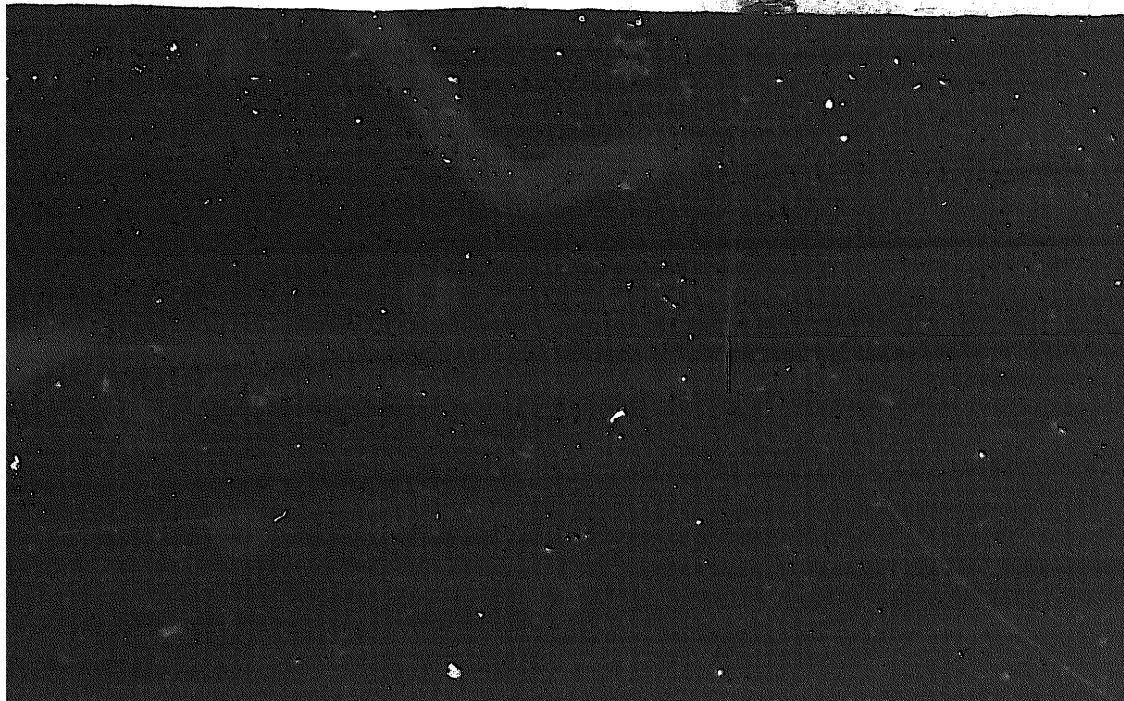
FOLD

END

9-18-83

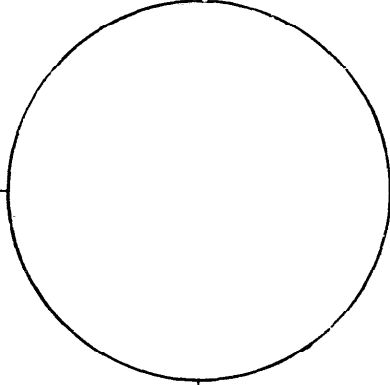
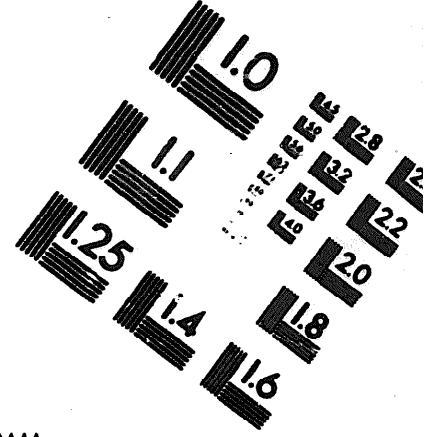
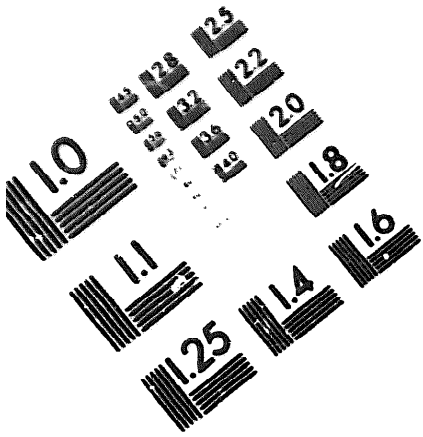
DATE





DEPARTMENT OF THE ARMY

MICROFORM
TEST TARGET



150 MM

1.0 mm (e= .81 mm)

ABCDEFGHIJKLMN OPQRSTUVWXYZ 1234567890
abcdefghijklmnopqrstuvwxyz \$%&/'%# 1/2 1/4 3/4 —=+ x&@*

1.5 mm (e= 1.09 mm)

ABCDEFGHIJKLMN OPQRSTUVWXYZ 1234567890
abcdefghijklmnopqrstuvwxyz \$%&/'%# 1/2 1/4 3/4 —=+ x&@*

2.0 mm (e= 1.37 mm)

ABCDEFGHIJKLMN OPQRSTUVWXYZ
abcdefghijklmnopqrstuvwxyz
1234567890 \$%&/'%# 1/2 1/4 3/4 —=+ x&@*

2.5 mm (e= 1.77 mm)

ABCDEFGHIJKLMN OPQRSTUVWXYZ
abcdefghijklmnopqrstuvwxyz
1234567890 \$%&/'%# 1/2 1/4 3/4 —=+ x&@*

1.0 mm (e= .81 mm)

ABCDEFGHIJKLMN OPQRSTUVWXYZ 1234567890
abcdefghijklmnopqrstuvwxyz \$%&/'%# 1/2 1/4 3/4 —=+ x&@*

1.5 mm (e= 1.09 mm)

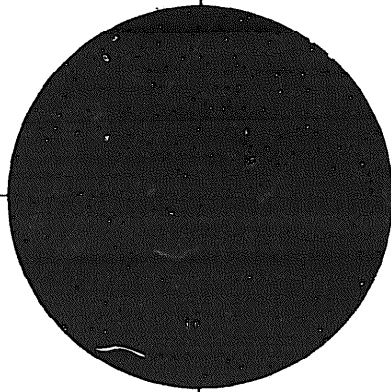
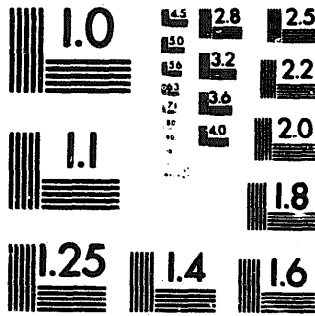
ABCDEFGHIJKLMN OPQRSTUVWXYZ 1234567890
abcdefghijklmnopqrstuvwxyz \$%&/'%# 1/2 1/4 3/4 —=+ x&@*

2.0 mm (e= 1.37 mm)

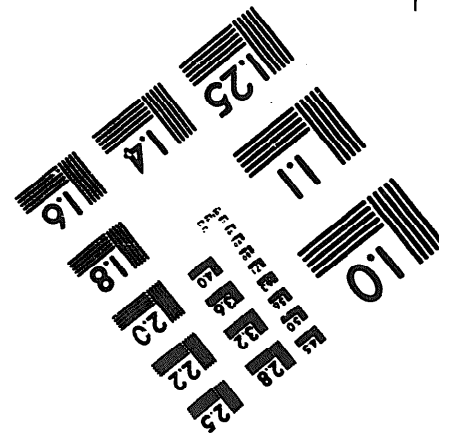
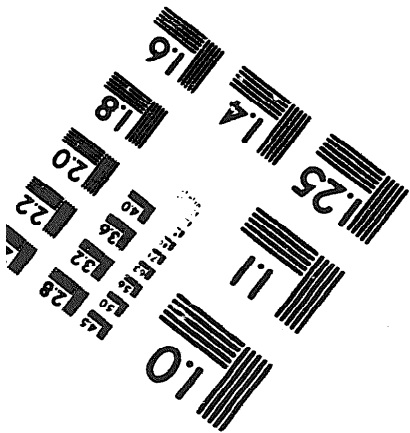
ABCDEFGHIJKLMN OPQRSTUVWXYZ
abcdefghijklmnopqrstuvwxyz
1234567890 \$%&/'%# 1/2 1/4 3/4 —=+ x&@*

2.5 mm (e= 1.77 mm)

ABCDEFGHIJKLMN OPQRSTUVWXYZ
abcdefghijklmnopqrstuvwxyz
1234567890 \$%&/'%# 1/2 1/4 3/4 —=+ x&@*



200 MM



250 MM